

Interreg



CENTRAL EUROPE

European Union
European Regional
Development Fund

MaGICLandscapes

TAKING
COOPERATION
FORWARD



Primo incontro con i portatori di
interesse dell'area pilota



Gli elementi che costituiscono le IV



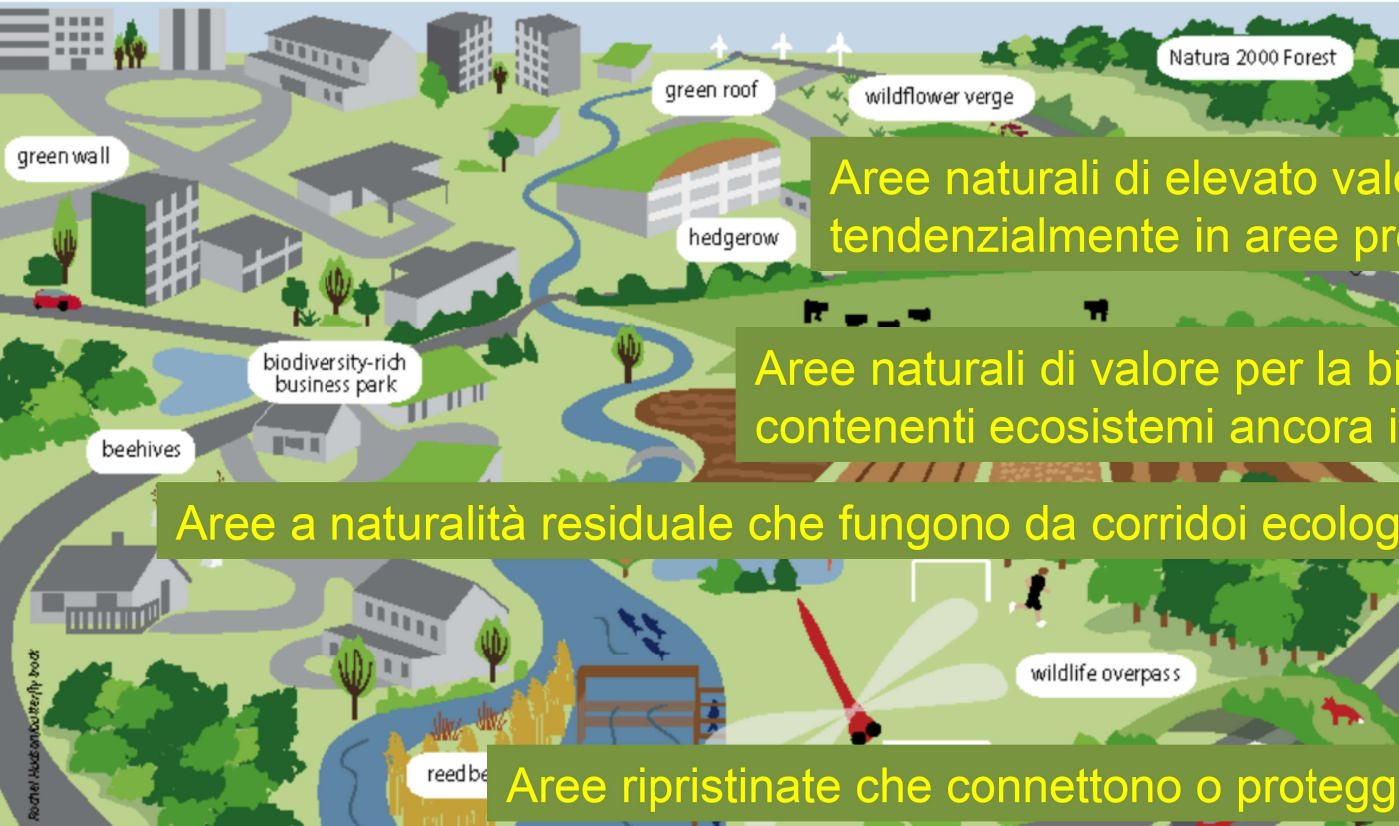
Simone Ciadamidaro – ENEA, Laboratorio Biodiversità e Servizi Ecosistemici

DEFINIZIONE DI INFRASTRUTTURA VERDE

Una Rete di **aree naturali e aree seminaturali** con **altri elementi ambientali pianificata a livello strategico**, progettata e gestita in maniera da fornire un'ampia gamma di servizi ecosistemici.

Ottenere così benefici multipli, ecologici, sociali ed economici salvaguardando il capitale naturale (compresa la biodiversità).





Aree naturali di elevato valore per la biodiversità, tendenzialmente in aree protette (ma non sempre)


Aree naturali di valore per la biodiversità, contenenti ecosistemi ancora in salute


Aree a naturalità residuale che fungono da corridoi ecologici, o «pietre di guado»


Aree naturali


Aree ripristinate che connettono o proteggono aree naturali


Potential components of a Green Infrastructure


- 


Core areas of high biodiversity value which act as hubs for GI, such as protected areas like Natura 2000 sites
- 


Core areas outside protected areas containing large healthy functioning ecosystems
- 

Restored habitats that help reconnect or enhance existing natural areas, such as a restored reedbed or wild flower meadow
- 

Natural features acting as wildlife corridors or stepping stones, like small watercourses, ponds, hedgerows, woodland strips
- 

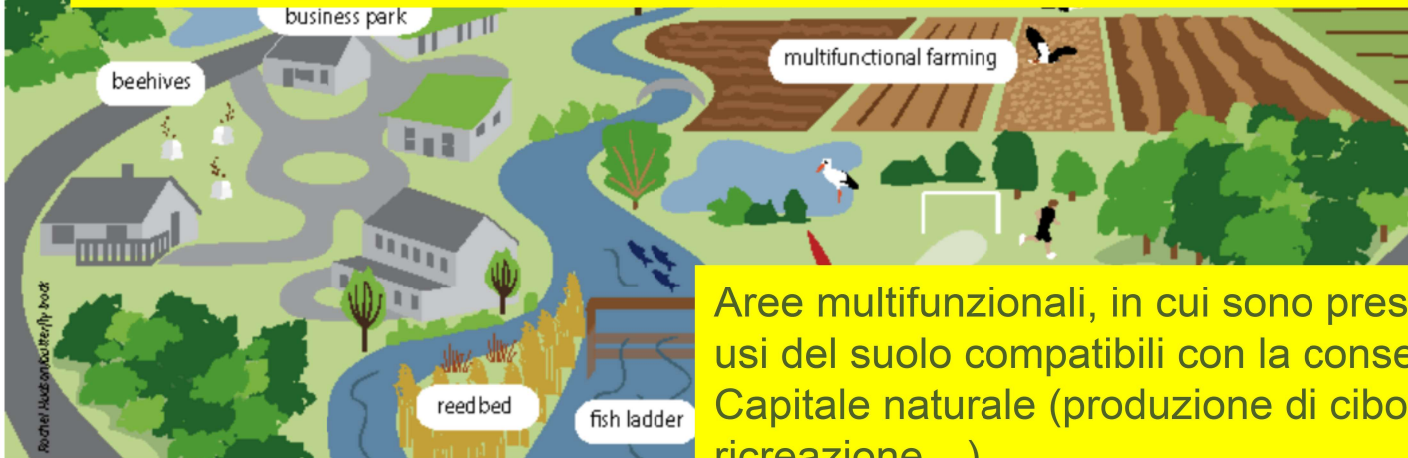
Artificial features that enhance ecosystem services or assist wildlife movement such as eco-ducts or eco-bridges, fish ladders or green roofs
- 

Buffer zones that are managed sustainably and help improve the general ecological quality and permeability of the landscape to biodiversity, e.g. wildlife-friendly farming
- 

Multi-functional zones where compatible land uses can join forces to create land management combinations that support multiple land uses in the same spatial area, e.g. food production and recreation
- 



Are «tampone», che aiutano a tenere alta la qualità ecologica (aree di agricoltura sostenibile, biologica...)



Are semi-naturali

Are multifunzionali, in cui sono presenti diversi usi del suolo compatibili con la conservazione del Capitale naturale (produzione di cibo, elementi naturali, ricreazione...)

Potential components of a Green Infrastructure



Core areas of high biodiversity value which act as hubs for GI, such as protected areas like Natura 2000 sites



Core areas outside protected areas containing large healthy functioning ecosystems



Restored habitats that help reconnect or enhance existing natural areas, such as a restored reedbed or wild flower meadow



Natural features acting as wildlife corridors or stepping stones, like small watercourses, ponds, hedgerows, woodland strips



Artificial features that enhance ecosystem services or assist wildlife movement such as eco-ducts or eco-bridges, fish ladders or green roofs



Buffer zones that are managed sustainably and help improve the general ecological quality and permeability of the landscape to biodiversity, e.g. wildlife-friendly farming



Multi-functional zones where compatible land uses can join forces to create land management combinations that support multiple land uses in the same spatial area, e.g. food production and recreation

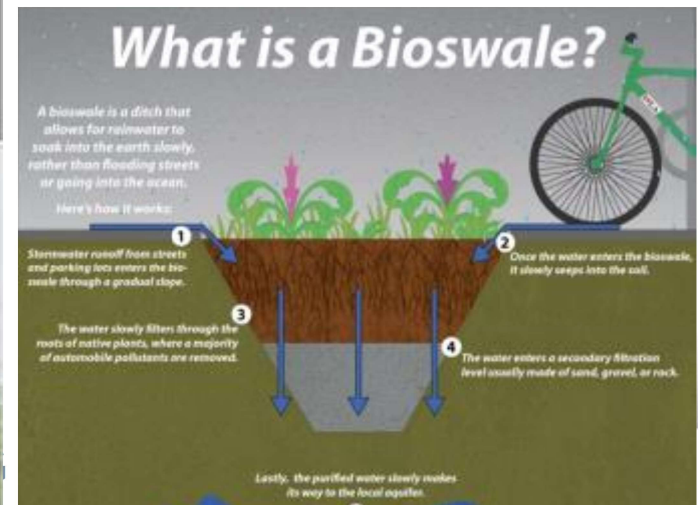


Tipologie di elementi artificiali di Infrastrutture verdi

Passaggi per la fauna
Ecodotti
Parchi urbani
Piste ciclabili

Soluzioni a imitazione della Natura Nature Based Solutions

Tetti verdi
Strade e vie alberate
Disconnessione delle grondaie dalla fognatura
Raccolta dell'acqua piovana
Fioriere
Pavimenti permeabili
Parcheggi verdi
Muri verdi
...



Elementi delle IV nell'area di progetto (cartografabili, CLC)

Green Infrastructure (GI):

- 141: Green urban areas
- 213: Rice fields
- 223: Olive groves
- 231: Pastures
- 242: Complex cultivation patterns
- 243: Land principally occupied by agriculture, with significant areas of nat. veg.
- 244: Agro-forestry areas
- 311: Broad-leaved forest
- 312: Coniferous forest
- 313: Mixed forest
- 321: Natural grasslands
- 322: Moors and heathland
- 323: Sclerophyllous vegetation
- 324: Transitional woodland-shrub
- 331: Beaches, dunes, sands
- 332: Bare rocks
- 333: Sparsely vegetated areas
- 334: Burnt areas
- 335: Glaciers and perpetual snow
- 411: Inland marshes
- 412: Peat bogs
- 421: Salt marshes
- 422: Salines
- 423: Intertidal flats
- 511: Water courses
- 512: Water bodies
- 521: Coastal lagoons
- 522: Estuaries
- 523: Sea and ocean

GI under specific circumstances or partly GI:

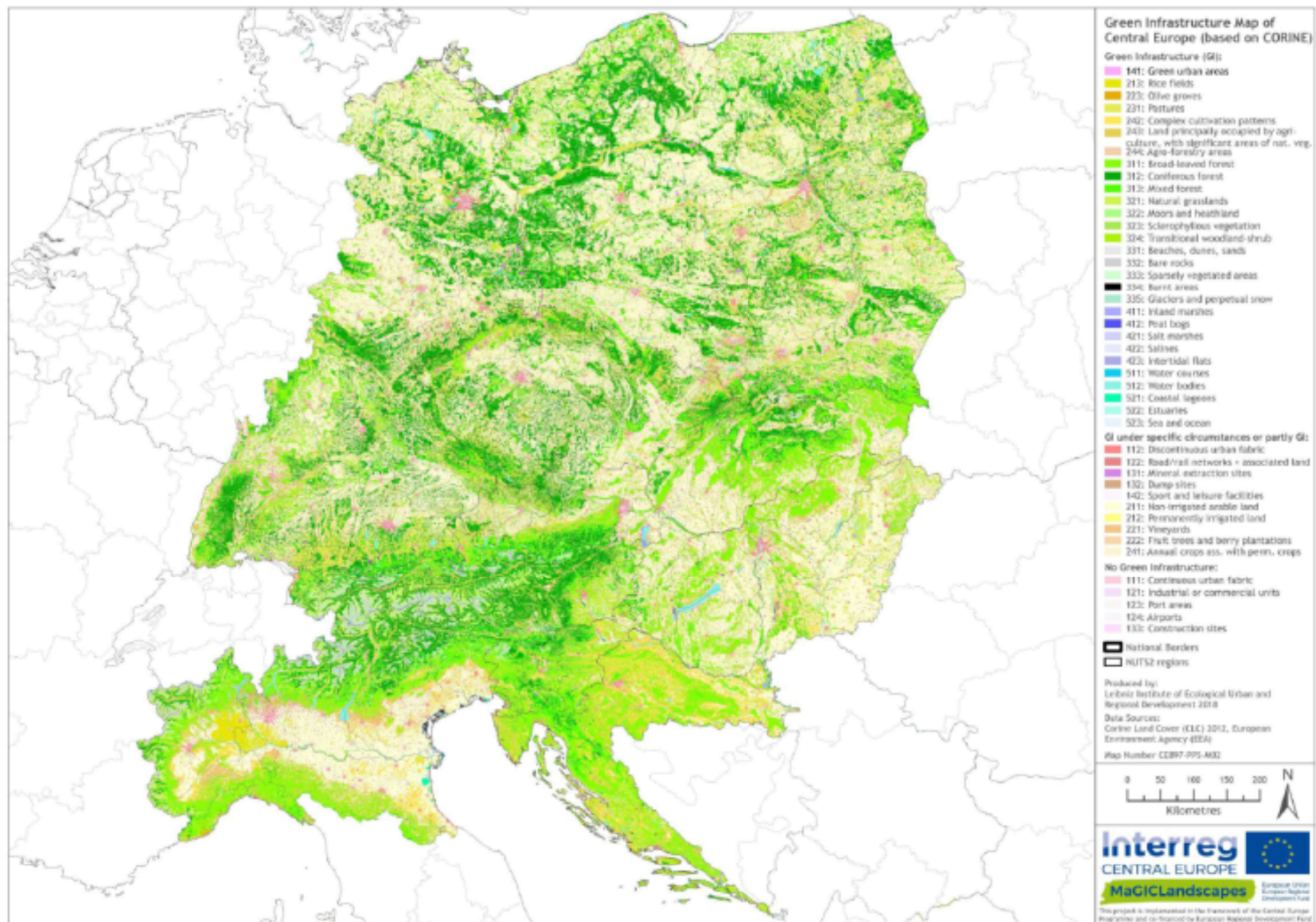
- 112: Discontinuous urban fabric
- 122: Road/rail networks + associated land
- 131: Mineral extraction sites
- 132: Dump sites
- 142: Sport and leisure facilities
- 211: Non-irrigated arable land
- 212: Permanently irrigated land
- 221: Vineyards
- 222: Fruit trees and berry plantations
- 241: Annual crops ass. with perm. crops

No Green Infrastructure:

- 111: Continuous urban fabric
- 121: Industrial or commercial units
- 123: Port areas
- 124: Airports
- 133: Construction sites



Mappa delle IV dell'Europa Centrale





Simone Ciadamidaro
ENEA Laboratorio Biodiversità e Servizi
Ecosistemici



www.interreg-central.eu/magiclandscapes



info@magiclandscape.com
simone.ciadamidaro@enea.it

