

Interreg



Co-funded by
the European Union

Alpine Space

BeyondSnow

BeyondSnow Newsletter #1: Building Resilience in Mountain Communities

Community Perception of Climate Change in the Alpine Tourism

Alpine communities are aware of the impacts of climate change on tourism, but they are divided on how to adapt. Some communities are more proactive in planning for climate change, while others are still waiting for more support from government and industry. What is needed by mountains communities to better face Climate Change?

[READ MORE >>>](#)



The Future of Alpine Ski Resorts and the Example of Metabief

The future of Alpine ski resorts is uncertain due to climate change. The warming climate is leading to shorter snow seasons and less predictable snowfall. This is making it difficult for

ski resorts to operate profitably. Metabief in France is already trying to diversify its activities investing on planning and new methodologies.

[READ MORE >>>](#)



Empower Decision-Makers with Resilience Indicators

Resilience indicators measure the resilience of communities and ecosystems to climate change, helping decision-makers identify vulnerabilities and develop more effective adaptation strategies. The BeyondSnow project aims to develop a digital tool that collects these indicators and makes them available to alpine communities.

[READ MORE >>>](#)



The importance of super regional exchange in facing transition in tourism destinations

Super-regional exchange is a powerful tool for tourism destinations to tackle common challenges and seize shared opportunities. It involves collaboration beyond traditional partnerships, with a higher level of coordination, resource sharing, and mutual support. In the context of change processes, such as climate change, supra-regional exchange is especially important.

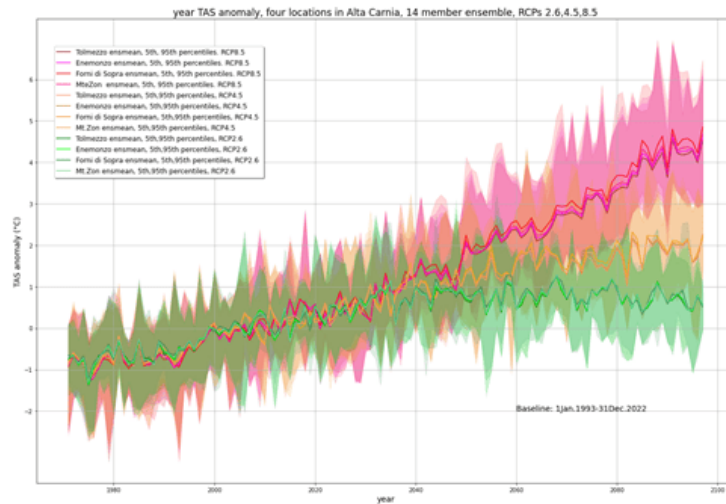
[READ MORE >>>](#)



Climate Crisis: First Climate Downscaling Results Over the Alta Carnia Region, Italy

Research on climate change is essential to develop effective solutions. We present a doctoral project in the Alta Carnia region of Italy that is developing bias correction and downscaling techniques to produce climate projections at a very local scale helping decision-makers to find better adaptation strategies to protect their communities and ecosystem.

[READ MORE >>>](#)



The Touristic Mountain: Rediscovering Its Essence Beyond Skiing

Rethinking mountain tourism in the face of climate change means to explore new horizons beyond skiing and redefine winter getaways for a sustainable future. We also need to foster community bonds by promoting local businesses, cultural events, and opportunities for visitors to interact with each other and with locals.

[READ MORE >>>](#)

