



Action 2.6

Screening for alternative material at short supply distance

PATRIMONIO CITTÀ DI SETTIMO TORINESE

Project partners



Patrimonio
s.r.l.



With the contribution of



Contents

INTRODUCTION 3

METHODOLOGY EMPLOYED 3

LOCAL BUSINESS SYSTEM 3

INNOVATIVE BUSINESSES 4

ANALYSIS BY SECTOR USING ATECO CODES..... 5

BUSINESSES IN THE ROAD CONSTRUCTIONS SECTOR..... 5

RECOVERY AND WASTE MATERIAL PROCESSING BUSINESSES 7

CREATION OF THE GEODATABASE 8

CONCLUSIONS..... 9

LIST OF COMPANIES ATECO 42.11.00..... 11

LIST OF COMPANIES ATECO 38.32.1 AND 38.32.2..... 14



Introduction

The objective of this action within the scope of the Tyrec4life Project is to investigate the possibility of improving the environmental sustainability of road constructions.

Human actions are defined as “sustainable” when they are part of a production system which enhances quality of the environment and the natural resources on which it depends, while preserving and improving soil quality and respecting biodiversity.

In road constructions, the problem of material procurement is naturally key to reducing the impacts of this kind of processes.

In this regard, the search for short-range suppliers of alternative materials (reusing them results in reducing the amount of materials ending up in landfills) is fundamental for increasing the sustainability of a high-impact process, such as road constructions, in addition to guaranteeing supply chain control and significantly reducing the effects of transportation.

Moreover, this choice adds value to local production and re-establishes the bond with the existing production infrastructures, especially in these times of economic crisis, in which this aspect can be turned into growth.

For this reason, the search focused the attention on those suppliers located within 30 km from the city of Settimo Torinese to build a database of businesses operating in the road construction industry and potentially capable of contributing to making asphalt surfaces containing powder from end-of-life tyres as additive.

Methodology employed

Methods employed:

The team will select officially coded industrial and commercial activities who could usually produce recycled materials for alternative uses. A survey among the owners will be produced in order to detail their activities and encourage to foresee possible alternative uses of their production left over. Each selected activities will be identified and geo-referenced in a GIS map.

The results is a cartographic identification on a GIS platform of each activities according to its categories and relative ATECO codes.

Local business system

The area north of Turin, and Settimo Torinese in particular, is characterised by the presence of a well-established, historical industrial “vocation”. This vocation is still present and lively despite the obvious signs of transformation and redefinition consisting of re-industrialising and re-vamping the old economic and productive infrastructures.



Major processes of transition, consolidation, transformation and re-establishment of industries are occurring in this area, in addition to a deep renovation and reshaping of the enterprise infrastructure as a whole, which has characterised the area for many years.

The good results achieved by integrating the actions of Public Authorities, responsible for planning the local transformation, with businesses create a virtuous opportunity for the industrial network to meet the knowledge network to provide reciprocal support.

Again with reference to the process aiming at fostering the technological transfer and the link with industrial application, the district is home to many profoundly research-oriented businesses, in addition to lifelong learning programmes and knowledge supply chain actions focused on supporting new industries, namely the powerful synergetic connection on the environmental platform between development opportunity infrastructures and knowledge society infrastructures.

Our local platform takes the features of a wide-ranging, rich combination of opportunities for developing internationalisation processes in the district, also by means of innovative technologies.

Innovative businesses

On the employment front, the system is substantially holding whereas, at the same time, a considerably shift can be observed in the distribution of personnel in the various economic sectors. More in detail, a personnel decrease in the industrial sector is corresponding to a general, substantial personnel increase in the tertiary sector, including commerce.

The sectors which have been most strongly affected by deindustrialisation and market reduction are textile and clothing, in addition to the production industries directly related to the automotive field.

Not all industries suffered the effects of globalisation and the consequent broadening of competition to developing countries. In particular, the machine tool manufacturing sector demonstrates the strong industrial tradition of this area and its major, well-established know-how.

An elementary survey of businesses in the district indicates that the greatest concentration (compared with the surrounding area) occurs in the town of Settimo Torinese, where the employment shift is also confirmed, with the prevalent weight now being in tertiary activities, such as real estate, transportation, IT, research, professional and enterprise services, public administration, education, health and social services.

This although not entirely positive description of the productive system can also be interpreted in terms of innovation capacity of the local businesses. The analysis of data from the databases of the Chamber of Commerce of Turin points out a limited, but increasing number of innovative businesses in the district, i.e. those which internally perform activities related to:

- product or process design and/or research;
- filing of industrial invention patents;
- cooperation with public research institutes over the past five years;
- involvement in research programmes activated in the European Union;



- use of high-tech systems and equipment;
- belonging to a sector which is innovative in itself.

The area of Settimo Torinese and neighboring municipalities is home to approximately 11% of all innovative businesses in the province of Turin and this is even more interesting when compared to the 20% of businesses located in the city of Turin.

The situation is thus one of a well-established local production system with strong potentials for development which can foster new production and innovation models.

Analysis by sector using ATECO codes

ATECO, standing for ATtività ECONomica (economic activity), is an automatic tool for attributing a code on the basis of a brief description of the economic activity.

ISTAT (the Italian National Statistics Institute) started adopting the ATECO 2007 on January 1, 2008. This classification is the national version of NACE (the Statistical Classification of Economic Activities in the European Community), Rev. 2, published in the Official Journal on December 20, 2006 (Regulation (CE) n. 1893/2006 of the European Parliament and Council dd. 12/20/2006).

In addition to ISTAT, which is responsible for coordination, it was adopted by the Authorities in charge of managing the major businesses and administration sources (Tax Authorities, Chambers of Commerce, Health and Social Security departments etc.) and the main trade associations.

A single classification was achieved by means of a close cooperation between the Agenzia delle Entrate (the Italian Income Tax Agency) and the Chambers of Commerce. For the first time in official statistics, the Tax Authorities and Chambers of Commerce adopted the same economic activity classification. This result represents a significant step in the direction of integrating and simplifying the information acquired and managed by Public Authorities.

Businesses in the road constructions sector

The first businesses which were investigated were those with ATECO code 42.11.00, i.e. businesses involved in *construction of roads, motorways and airport runways* which could provide support and/or integrate the technologies already in use in the town of Settimo Torinese.

The research identified a total of 237 businesses in the province of Turin, from which those located at a distance of less than 30 km from Settimo Torinese were picked.

The results show that most of the road construction businesses in the province of Turin are mainly located in Turin (114 businesses over 188). This must be put into the right perspective since nearly all these businesses only have the registered office in the city. Instead, it is interesting to note that there are 74 businesses located in the towns surrounding Turin.



The remaining 49 companies are located in towns more than 30 km away from Settimo Torinese.

comune entro 30Km da Settimo Torinese	numero di imprese cod ATECO 42.11.00
Aglie'	1
Almese	1
Alpignano	5
Baldissero canavese	1
Barone canavese	2
Brandizzo	2
Cafasse	1
Caluso	1
Cambiano	1
Candiolo	1
Caselle torinese	2
Chieri	2
Chivasso	4
Collegno	1
Favria	1
Feletto	1
Giaveno	1
Givoletto	2
Grugliasco	2
Leini'	6
Moncalieri	7
Nichelino	1
Nole	1
Orbassano	1
Rivara	1
Rivarolo canavese	1
Rivoli	1
Robassomero	1
Rondissone	1
San benigno canavese	1
San carlo canavese	2
San maurizio canavese	1
San mauro torinese	1
Settimo torinese	6
Torino	114
Torrazza piemonte	1
Trofarello	3
Venaria	1
Vinovo	4
Volpiano	1
Totale complessivo	188



Recovery and waste material processing businesses

Secondly, we analysed businesses in the material recovery sector to determine whether there were any tyre powder manufacturers in the short range and other companies which could provide waste materials suited to making asphalt, such as for example waste material from demolitions or other similar activities.

More in detail, we investigated ATECO categories 38.32.1, *Recovery and preparation for recycling of plastic materials for making plastic raw materials, synthetic resins*, and 38.32.2, *Recovery and preparation for recycling of solid urban and industrial waste and biomasses*.

As a whole, 60 businesses were identified in the province of Turin. Given the low number, it was chosen to include them all in the database.

Secondly, the firms active in the field of recycling of waste material has been analysed, in order to

- Check whether in the short range there are businesses that produce scarp tyre rubber
- Check whether in the short range there are also businesses that produce waste material suitable for the production of mixed asphalt, not only using rubber but also waste material coming from demolition works (or similar)

comune	numero di imprese cod ATECO 38.32.1-2
Aglie'	1
Airasca	1
Alpignano	1
Beinasco	1
Borgone susa	1
Bosconero	1
Brandizzo	1
Caluso	1
Cambiano	1
Caselette	2
Castellamonte	1
Cavagnolo	1
Cirie'	1
Ivrea	1
La loggia	3
Leini'	1
Moncalieri	1
Montalenghe	1
Orbassano	1
Pinerolo	1
Poirino	2
Riva presso chieri	1
Rivoli	2
Roletto	1
Salassa	1
San germano chisone	1
San gillio	1
Santena	1
Settimo torinese	2
Torino	17
Trofarello	1
Venaria	1
Vigone	1
Villanova canavese	1
Vinovo	1
Volpiano	2
Volvera	1
Totale complessivo	60



Creation of the Geodatabase

The next step consisted in mapping the businesses located in the district to the north of the metropolitan area of Turin which could potentially supply materials within the scope of experimentation of this project in case of similar future interventions.

Patrimonio S.r.l. thus analysed and designed the database for managing the alternative material suppliers for road construction and transferred the results to the Settimo Torinese WebGIS, in the geographic database browsing area so that it could be readily used as information base. The new database complies with the requirements of the Settimo Torinese WebGIS system.

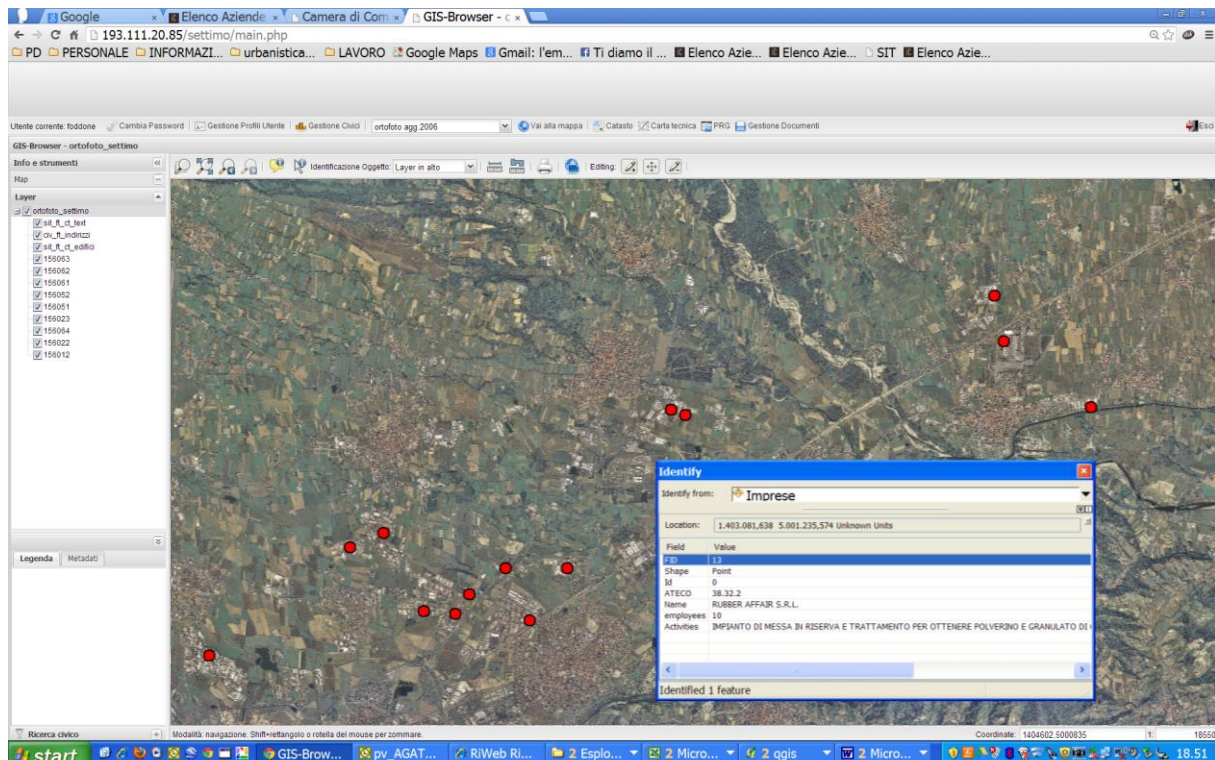
The system allows to access several key functions and alphanumeric and geographic database queries.

Map-satellite-hybrid by Bing maps was used for the published maps.

- WebGIS solution

This is a map service with the typical features of an evolved WebGIS with Web 2.0 connotation. The system provides the following functions:

- Interactive Tables of Contents (TOC) with possibility of viewing and interacting with the layers loaded on the map;
- Typical navigation controls (zoom in, zoom out, pan etc.) and calculation of the display extremes and scale factor;
- Tools for querying objects and opening information windows.



Conclusions

The analyses conducted so far have provided a better knowledge of the road construction business system allowing the company Patrimonio Città di Settimo Torinese S.r.l., and therefore the Local Authorities, to obtain a clearer picture of where and how to procure alternative materials suitable for experimentation.

Although many researches and real-scale applications have indicated that the materials deriving from end-of-life tyres may be beneficially used as additional components in bituminous mixtures to make the upper layers of road surfaces, the use of such materials has had a rather limited dissemination, often limited to pilot projects or construction and maintenance projects on local level; this trend is also confirmed in Piedmont, where the only applications (in addition to those in the scope of the Tyrec4life Project) are represented by a stretch of the Borgaro-Venaria road provided by the Province of Turin in 2010 and short stretches in the provinces of Alessandria and Cuneo.

There are three main causes of this limited use: economy and cost, processing difficulties and lack of demand.

With regards to economy, the shortage of companies capable of producing bitumen with additives on today's market makes the product difficult to be found and its average cost is 30% higher than the bitumen currently used.

Technical difficulties are added to the issue of costs. The need for constant temperature during processing makes using the bitumen containing end-of-life tyre powder more complicated, particularly in cities. While the operation of laying the wearing course on extra-urban roads is facilitated by the absence of interruptions to the process, the presence of frequent obstacles and complicate street layouts in cities prevents the continuous use of pavers. In these cases, manual paving is needed and this is made difficult by the intrinsic nature of the bitumen containing end-of-life tyre powder.

The third factor which prevents the dissemination of this technology is the absence of demand, and this is the reason why even businesses which are aware of the benefits do not move to adapt their production cycles.

“Demand-forming” actions, i.e. initiatives aimed at making materials more competitive with respect to traditional materials, must be started in order to make the materials derived from end-of-life tyres available for use in road paving in Italy.

In this perspective, it is worth mentioning the role of Public Authorities (mainly Municipalities, Provinces and Metropolitan Areas) in designing, making and maintaining road infrastructures. Public Authorities are responsible for appointing the design, construction and maintenance of the infrastructures themselves, and therefore concrete demand-forming initiatives must necessarily address Public Authorities and operators.

The lack of demand is mainly due to the fact that this specific process is not normally included in regional price lists for public works.

This is fundamental because the road owning Public Authorities do not include these processes in their tenders for new roads or road maintenance preferring to remain fixed to the items included in the regional price list.



Although the search for businesses already capable of using bitumen with end-of-life tyre powder additives in the area surrounding the town of Settimo Torinese did not yield satisfactory results, the work was still a first crucial step in the direction of disseminating the use of this technology. The business database was built as a GIS and therefore can be queried and updated over the years allowing to integrate information related to the various companies with regards to the dissemination of this type of technology.



List of companies ATECO 42.11.00

Codice ATECO 2007	Azienda	Città	distanza dal comune di Settimo Torinese
42.11.00	G.m.a. di fazari saveria	Aglie'	entro 30Km
42.11.00	Geom. di stefano salvatore	Almese	entro 30Km
42.11.00	Alpignano scavi di centrella armando	Alpignano	entro 30Km
42.11.00	Asfalti m.r. di mazza rocco	Alpignano	entro 30Km
42.11.00	Coda fratelli s.r.l.	Alpignano	entro 30Km
42.11.00	D & d segnaletica di decataldo davide	Alpignano	entro 30Km
42.11.00	Maplex s.r.l.	Alpignano	entro 30Km
42.11.00	Biondi s.p.a.	Baldissero canavese	entro 30Km
42.11.00	Jiboc dimitru	Barone canavese	entro 30Km
42.11.00	Niculaica dimitru	Barone canavese	entro 30Km
42.11.00	Quinn christopher lee	Brandizzo	entro 30Km
42.11.00	Stachowicz lukasz mikolaj	Brandizzo	entro 30Km
42.11.00	Segnal - strada di palumbo gaetano	Cafasse	entro 30Km
42.11.00	Chiario pierino	Caluso	entro 30Km
42.11.00	Coniglio antonio	Cambiano	entro 30Km
42.11.00	Blanda giuseppe	Candiolo	entro 30Km
42.11.00	Giovale s.r.l.	Caselle torinese	entro 30Km
42.11.00	Lavori edili stradali (l.e.s.) s.r.l.	Caselle torinese	entro 30Km
42.11.00	G.t. s.n.c. di tamagnone giovanni e c.	Chieri	entro 30Km
42.11.00	Mo.vi. di vignotto giancarlo & c. s.n.c.	Chieri	entro 30Km
42.11.00	Cammarata mariano	Chivasso	entro 30Km
42.11.00	Marini guerrino	Chivasso	entro 30Km
42.11.00	Molinaro pasquale	Chivasso	entro 30Km
42.11.00	Tivadar ioan	Chivasso	entro 30Km
42.11.00	Siramvin s.r.l.	Collegno	entro 30Km
42.11.00	Faval di valovatto gian luca	Favria	entro 30Km
42.11.00	Pascarella felice	Feletto	entro 30Km
42.11.00	Bes impresa asfalti s.r.l.	Giaveno	entro 30Km
42.11.00	Maniero scavi s.r.l.	Givoletto	entro 30Km
42.11.00	Musso mario	Givoletto	entro 30Km
42.11.00	Coimas s.a.s. di ascioti vincenzo e c.	Grugliasco	entro 30Km
42.11.00	Simar di cojocariu marius ciprian	Grugliasco	entro 30Km
42.11.00	Ephemere s.r.l.	Leini'	entro 30Km
42.11.00	P. & p. di amione daniele	Leini'	entro 30Km
42.11.00	S.b. e s. di decataldo adele e c. s.a.s.	Leini'	entro 30Km
42.11.00	Sial di colella pompea	Leini'	entro 30Km
42.11.00	Sigat s.r.l.	Leini'	entro 30Km
42.11.00	Vittone pier luigi	Leini'	entro 30Km
42.11.00	Ideal posa di montaperto daniele	Moncalieri	entro 30Km
42.11.00	Infosegnali di vicario massimo	Moncalieri	entro 30Km
42.11.00	Millennium s.r.l.	Moncalieri	entro 30Km
42.11.00	Nico.mat strade & strade costruzioni stradali di caniglia giusy & c. s.a.s.	Moncalieri	entro 30Km
42.11.00	P.g.e. di stellittano santo	Moncalieri	entro 30Km
42.11.00	Porfid art di iavarone eliseo	Moncalieri	entro 30Km
42.11.00	Sorgiovanni nicolangelo e tassone cosimo asfalti - s.n.c.	Moncalieri	entro 30Km
42.11.00	Alas snc di auddino d.& c.	Nichelino	entro 30Km
42.11.00	Beria geom. piero & c. - s.n.c.	Nole	entro 30Km
42.11.00	Green keeper subalpina srl	Orbassano	entro 30Km
42.11.00	Vallino franco	Rivara	entro 30Km
42.11.00	A.m.c. green srl	Rivarolo canavese	entro 30Km
42.11.00	Falcone vincenzo	Rivoli	entro 30Km
42.11.00	Lombrino giuseppe	Robassomero	entro 30Km
42.11.00	Panero chiara	Rondissone	entro 30Km
42.11.00	Bua costruzioni di bua geom. antonio	San benigno canavese	entro 30Km
42.11.00	Borgognone santino	San carlo canavese	entro 30Km
42.11.00	Carnieletto silvano & figli - s.n.c.	San carlo canavese	entro 30Km
42.11.00	Franco segnaletica di cirasella francesco	San maurizio canavese	entro 30Km
42.11.00	Mazzucchetti strade s.r.l. in liquidazione	San mauro torinese	entro 30Km
42.11.00	Cascina muletto societa' in accomandita semplice di fasano maddal ena concetta e c.	Settimo torinese	entro 30Km
42.11.00	Foresto armando s.p.a.	Settimo torinese	entro 30Km
42.11.00	Global costruzioni s.r.l.	Settimo torinese	entro 30Km
42.11.00	P.k.c. publikosmo arredo di falco jonatha	Settimo torinese	entro 30Km
42.11.00	Scavi 2008 di luzaj aiet	Settimo torinese	entro 30Km
42.11.00	Telfan s.r.l.	Settimo torinese	entro 30Km
42.11.00	A.co.fer s.r.l. in liquidazione	Torino	entro 30Km
42.11.00	A.s.i.e. impianti semaforici di gallitelli emanuela	Torino	entro 30Km
42.11.00	Actos - societa' consortile a responsabilita' limitata	Torino	entro 30Km
42.11.00	Agrogreen s.r.l.	Torino	entro 30Km



Codice ATECO 2007	Azienda	Città	distanza dal comune di Settimo Torinese
42.11.00	Alisea s.a.s. di paolo bertana & c. siglabile alisea s.a.s. di p. bertana & c.	Torino	entro 30Km
42.11.00	Asfalti 2000 di nicotra angelo	Torino	entro 30Km
42.11.00	Autostrada torino-milano societa' per azioni	Torino	entro 30Km
42.11.00	B.c. di borelli carmine	Torino	entro 30Km
42.11.00	Belmi costruzioni s.r.l. in liquidazione	Torino	entro 30Km
42.11.00	Bresciani bruno societa' a responsabilita' limitata siglabile bresciani bruno s.r.l.	Torino	entro 30Km
42.11.00	C.i.a.t. s.r.l.	Torino	entro 30Km
42.11.00	C.p.c. s.r.l.	Torino	entro 30Km
42.11.00	Cgm s.r.l.	Torino	entro 30Km
42.11.00	Ciessepi - confesercenti societa' cooperativa	Torino	entro 30Km
42.11.00	Co.ge.fa. s.p.a.	Torino	entro 30Km
42.11.00	Co.stra.vi. s.r.l.	Torino	entro 30Km
42.11.00	Coges costruzioni generali srl siglabile coges srl	Torino	entro 30Km
42.11.00	Consorzio lavori e servizi integrati torino in liquidazione	Torino	entro 30Km
42.11.00	Consorzio stabile sis societa' consortile per azioni siglabile sis scpa , consorzio stabile sis scpa, sis s.c.p.a., scpa consorzio stabile sis, s.c.p.a. consorzio stabile sis	Torino	entro 30Km
42.11.00	Continental costruzioni s.r.l.	Torino	entro 30Km
42.11.00	Crapanzano carlo	Torino	entro 30Km
42.11.00	Cresto costruzioni s.r.l.	Torino	entro 30Km
42.11.00	Cumino s.r.l.	Torino	entro 30Km
42.11.00	Cuzzola pasquale	Torino	entro 30Km
42.11.00	D.f. di di stefano franco	Torino	entro 30Km
42.11.00	Dear s.r.l.	Torino	entro 30Km
42.11.00	Debono angelo	Torino	entro 30Km
42.11.00	Di pietrantonio & c. s.r.l.	Torino	entro 30Km
42.11.00	Ditta fratelli s.a.s. di ansari salah e ansari omar e c.	Torino	entro 30Km
42.11.00	Domus costruzioni di geom. pugliese annino	Torino	entro 30Km
42.11.00	Duemilasei societa' consortile a responsabilita' limitata in liquidazione in forma abbreviata 2006 scari in liquidazione	Torino	entro 30Km
42.11.00	Edilstrade s.r.l.	Torino	entro 30Km
42.11.00	El houachmi khalid	Torino	entro 30Km
42.11.00	Enneci pose societa' a responsabilita' limitata siglabile enneci pose s.r.l.	Torino	entro 30Km
42.11.00	Erbi' asfalti e costruzioni s.r.l.	Torino	entro 30Km
42.11.00	Essezeta s.r.l.	Torino	entro 30Km
42.11.00	Euro building srl	Torino	entro 30Km
42.11.00	Euro costruzioni s.r.l.	Torino	entro 30Km
42.11.00	Europa strade di russi antonio	Torino	entro 30Km
42.11.00	F.c. costruzioni s.r.l. in liquidazione	Torino	entro 30Km
42.11.00	Felizzano s.c.a.r.l.	Torino	entro 30Km
42.11.00	Flooring s.r.l.	Torino	entro 30Km
42.11.00	Florida corradino - in fallimento	Torino	entro 30Km
42.11.00	G.s.t. gruppo segnalatori torino s.n.c. di brait & c.	Torino	entro 30Km
42.11.00	Gassino societa' consortile a responsabilita' limitata in liquidazione in breve denominata: gassino s.c. a r.l. in liquidazione	Torino	entro 30Km
42.11.00	Gdl di iannizzi giorgio	Torino	entro 30Km
42.11.00	Geonova s.r.l.	Torino	entro 30Km
42.11.00	Germa s.r.l. in liquidazione	Torino	entro 30Km
42.11.00	Giga s.r.l.	Torino	entro 30Km
42.11.00	Gran san bernardo societa' consortile a responsabilita' limitata	Torino	entro 30Km
42.11.00	I.c.i.m. s.r.l. in liquidazione	Torino	entro 30Km
42.11.00	I.c.r. s.r.l. in liquidazione	Torino	entro 30Km
42.11.00	Ideal porfido di roznov vasile adrian	Torino	entro 30Km
42.11.00	Inc general contractor s.p.a. siglabile inc ge.co s.p.a.	Torino	entro 30Km
42.11.00	Inc spa	Torino	entro 30Km
42.11.00	Infrastrutture & servizi - inser - societa' per azioni	Torino	entro 30Km
42.11.00	Infrastrutture societa' cooperativa	Torino	entro 30Km
42.11.00	Ital strade di marqaglio luca	Torino	entro 30Km
42.11.00	Italfrese s.r.l.	Torino	entro 30Km
42.11.00	Kavanagh terence joseph	Torino	entro 30Km
42.11.00	Ladasfalt s.n.c. di larosa dante e c.	Torino	entro 30Km



Codice ATECO 2007	Azienda	Città	distanza dal comune di Settimo Torinese
42.11.00	Luna s.r.l.	Torino	entro 30Km
42.11.00	M.c. s.r.l.	Torino	entro 30Km
42.11.00	M.g. costruzione asfalti di guerra pasquale e c. s.a.s.	Torino	entro 30Km
42.11.00	Master service - societa' cooperativa in liquidazione siglabile m aster service - s.c. in liquidazione	Torino	entro 30Km
42.11.00	Mct srl	Torino	entro 30Km
42.11.00	Mec porfidi di manea	Torino	entro 30Km
42.11.00	Med s.a.s. di sola alberto & c.	Torino	entro 30Km
42.11.00	Melchiorre luigi	Torino	entro 30Km
42.11.00	Messina emanuele	Torino	entro 30Km
42.11.00	Metro-nizza societa' consortile a responsabilita' limitata siglabile metro-nizza s.c.a.r.l.	Torino	entro 30Km
42.11.00	Mortara soc. cons. a r.l.	Torino	entro 30Km
42.11.00	Norditalia*costruzioni - societa' cooperativa a r.l.	Torino	entro 30Km
42.11.00	Novara realstrade s.r.l.	Torino	entro 30Km
42.11.00	Nuova 2r s.r.l. - in liquidazione	Torino	entro 30Km
42.11.00	Nuova asfalti s.r.l.	Torino	entro 30Km
42.11.00	Nuova segnaletica andrea di tenna andrea	Torino	entro 30Km
42.11.00	Olympia engineering - s.r.l.	Torino	entro 30Km
42.11.00	Omnia costruzioni s.r.l.	Torino	entro 30Km
42.11.00	Orecchia asfalti - societa' a responsabilita' limitata	Torino	entro 30Km
42.11.00	Palumbo r.d. strade	Torino	entro 30Km
42.11.00	Panerati daniele & c. s.a.s.	Torino	entro 30Km
42.11.00	Parcheggi magellano s.r.l.	Torino	entro 30Km
42.11.00	Parcheggi pascoli s.r.l.	Torino	entro 30Km
42.11.00	Parcheggi rubino s.r.l.	Torino	entro 30Km
42.11.00	Pavimentazione moderna torino s.r.l. in liquidazione	Torino	entro 30Km
42.11.00	Pereteatcu vadim	Torino	entro 30Km
42.11.00	Piemonte asfalti s.r.l.	Torino	entro 30Km
42.11.00	Pinerolo societa' consortile a responsabilita' limitata in liquidazione	Torino	entro 30Km
42.11.00	R.b.s. di belletti renata	Torino	entro 30Km
42.11.00	R.l.d. s.n.c. di moio salvatore e solito cosima	Torino	entro 30Km
42.11.00	Regaldo piro s.r.l. in liquidazione	Torino	entro 30Km
42.11.00	S.i.a. - societa' italiana antinfortunistica s.r.l. siglabile s.i.a. s.r.l.	Torino	entro 30Km
42.11.00	S.i.t.s.a. s.r.l.	Torino	entro 30Km
42.11.00	Saf italia s.r.l.	Torino	entro 30Km
42.11.00	Salis francesco	Torino	entro 30Km
42.11.00	Se.ca.p. s.r.l.	Torino	entro 30Km
42.11.00	So.ge.ma. s.r.l.	Torino	entro 30Km
42.11.00	Societa' costruzioni edili stradali s.r.l. siglabile so.co.e.st. srl	Torino	entro 30Km
42.11.00	Sofidim 2000 s.r.l.	Torino	entro 30Km
42.11.00	Sts s.r.l.	Torino	entro 30Km
42.11.00	Superstrada pedemontana veneta srl	Torino	entro 30Km
42.11.00	Tavella ermanno	Torino	entro 30Km
42.11.00	Tecnolavori s.r.l.	Torino	entro 30Km
42.11.00	Tedesco s.n.c. di tedesco giuseppe & c.	Torino	entro 30Km
42.11.00	Tekno impresa -*costruzioni ed impianti - di farina mario e c. - s.a.s.	Torino	entro 30Km
42.11.00	Termos coperture di santaquida salvatore	Torino	entro 30Km
42.11.00	Texa s.r.l.	Torino	entro 30Km
42.11.00	Ticinense societa' consortile a responsabilita' limitata	Torino	entro 30Km
42.11.00	Torino strade s.a.s. di patriarca elena & c.	Torino	entro 30Km
42.11.00	Torino tennis di casassa armando e c. s.a.s.	Torino	entro 30Km
42.11.00	Trincherò gianluigi di trincherò gianluigi	Torino	entro 30Km
42.11.00	Trincherò gianluigi societa' a responsabilita' limitata in sigla trincherò gianluigi s.r.l.	Torino	entro 30Km
42.11.00	Truffo marco	Torino	entro 30Km
42.11.00	El.li.sa. s.r.l.	Torrazza piemonte	entro 30Km
42.11.00	Bk di bicia klodian	Trofarello	entro 30Km
42.11.00	Tecno asfalti di de luise francesco	Trofarello	entro 30Km
42.11.00	Trovato loris	Trofarello	entro 30Km
42.11.00	Dimitri giuliano francesco	Venaria	entro 30Km
42.11.00	A.m.s.c. - s.n.c. di auddino antonio e bosusco sergio	Vinovo	entro 30Km
42.11.00	Asfalti vinovo s.a.s. di catalanotto geom. gerolamo e c.	Vinovo	entro 30Km
42.11.00	Blanda giovanni	Vinovo	entro 30Km
42.11.00	Rem - craverò societa' a responsabilita' limitata	Vinovo	entro 30Km
42.11.00	Fiore vivai snc di fiore michele e c.	Volpiano	entro 30Km



List of companies ATECO 38.32.1 and 38.32.2

ATECO 2007	Azienda	Città
38.32.02	Oberto*plast -s.r.l.	Aglie'
38.32.03	Ecolegno airasca s.r.l.	Airasca
38.32.03	Fea silvana e furini rosa s.n.c.	Alpignano
38.32.02	Demap s.r.l.	Beinasco
38.32.03	Scarlato giacomino	Borgone susa
38.32.02	Bacchetta alessandro	Bosconero
38.32.02	E.l.m.i. plastik di ciconi elizaveta	Brandizzo
38.32.03	Ferrarese snc di ferrarese francesco e c.	Caluso
38.32.02	Selpplast di elvis lupo & c. s.a.s.	Cambiano
38.32.02	R.r.p. srl	Caselette
38.32.03	Feraru corina	Caselette
38.32.02	Figplast s.r.l.	Castellamonte
38.32.03	Cama di militello salvatore e c. - societa' in nome collettivo	Cavagnolo
38.32.03	Ecovalli s.a.s. di barbara miglietti e c.	Cirie'
38.32.03	Dossetto s.r.l.	Ivrea
38.32.02	Gattino sharon	La loggia
38.32.03	La romana di boasso roberto	La loggia
38.32.03	Pezzamificio g.m. di gestri marco	La loggia
38.32.03	Elba s.r.l.	Leini'
38.32.03	R.service di zappaterra roberto	Moncalieri
38.32.03	Recicla s.r.l.	Montalenghe
38.32.02	Essevi s.r.l.	Orbassano
38.32.03	S.i.r.me. sas di cavalli aldo & c.	Pinerolo
38.32.02	Europlastic s.r.l.	Poirino
38.32.02	Recu plast s.r.l.	Poirino
38.32.03	Recupero ligneo-cellulosici sas di stuardi gianantonio & c.	Riva presso chieri
38.32.02	Plasteco polimeri s.a.s. di ferrero gianfranco & c.	Rivoli
38.32.02	Plastic power s.r.l. in liquidazione	Rivoli
38.32.03	Trasmal s.r.l.	Roletto
38.32.03	R.g. polietilene s.a.s. di serena cerutti elide	Salassa
38.32.02	Econord srl	San germano chisone
38.32.03	Suprema s.r.l.	San gillio
38.32.03	Recycling ecological waste - societa' a responsabilita' limitata in liquidazione	Santena
38.32.02	Berri due s.n.c. di messina francesco e benedetto alessandro	Settimo torinese
38.32.02	Rubber affair s.r.l. siglabile r.a. s.r.l.	Settimo torinese
38.32.02	Best recycling societa' a responsabilita' limitata siglabile best recycling s.r.l.	Torino
38.32.02	Cadauta revive s.r.l. - in liquidazione	Torino
38.32.02	D.c.f. s.a.s. di dell'aquila iolanda & c.	Torino
38.32.02	Eurodue s.r.l.	Torino
38.32.02	Mq imballaggi s.r.l.	Torino
38.32.02	Plasticarta s.r.l.	Torino
38.32.03	32 metalli s.r.l.	Torino
38.32.03	Amiat - trattamento beni durevoli s.r.l. siglabile amiat t.b.d. s.r.l. societa' unipersonale	Torino
38.32.03	Balfer s.a.s. di ferrando vittorio & c. siglabile balfer s.a.s.	Torino
38.32.03	Bcs recycling s.n.c. di feletto manuela e c.	Torino
38.32.03	Effe-erre - fioraso recuperi s.n.c. di fioraso roberto e c.	Torino
38.32.03	Euro-coop - societa' cooperativa a responsabilita' limitata	Torino
38.32.03	Invetnet - s.r.l.	Torino
38.32.03	Noisette piccola societa' cooperativa a r.l.	Torino
38.32.03	Oli-metal di alisetta dario & c. - s.n.c.	Torino
38.32.03	Soretra s.r.l.	Torino
38.32.03	Turin-carta s.r.l.	Torino
38.32.03	Legatoria giovì di carluccio vito	Trofarello
38.32.03	Gaziano salvatore	Venaria
38.32.03	De paoli fabrizio & c. s.n.c.	Vigone
38.32.02	Porr plastic di porro debora	Villanova canavese
38.32.03	Societa' agricola cooperativa speranza siglabile coop. agr. speranza	Vinovo
38.32.03	Giovannelli s.a.s. di quaglia rosa e c.	Volpiano
38.32.03	L.s. di tammario antonio & c. - s.a.s.	Volpiano
38.32.03	Geo progetto ambiente societa' a responsabilita' limitata	Volvera



For more info, please contact:

Città Metropolitana di Torino

Arch. Agata Fortunato

Tel: +39 011 8616872

Fax: +39 011 8616730

Email: tyrec4life@cittametropolitana.torino.it

www.tyrec4life.eu

